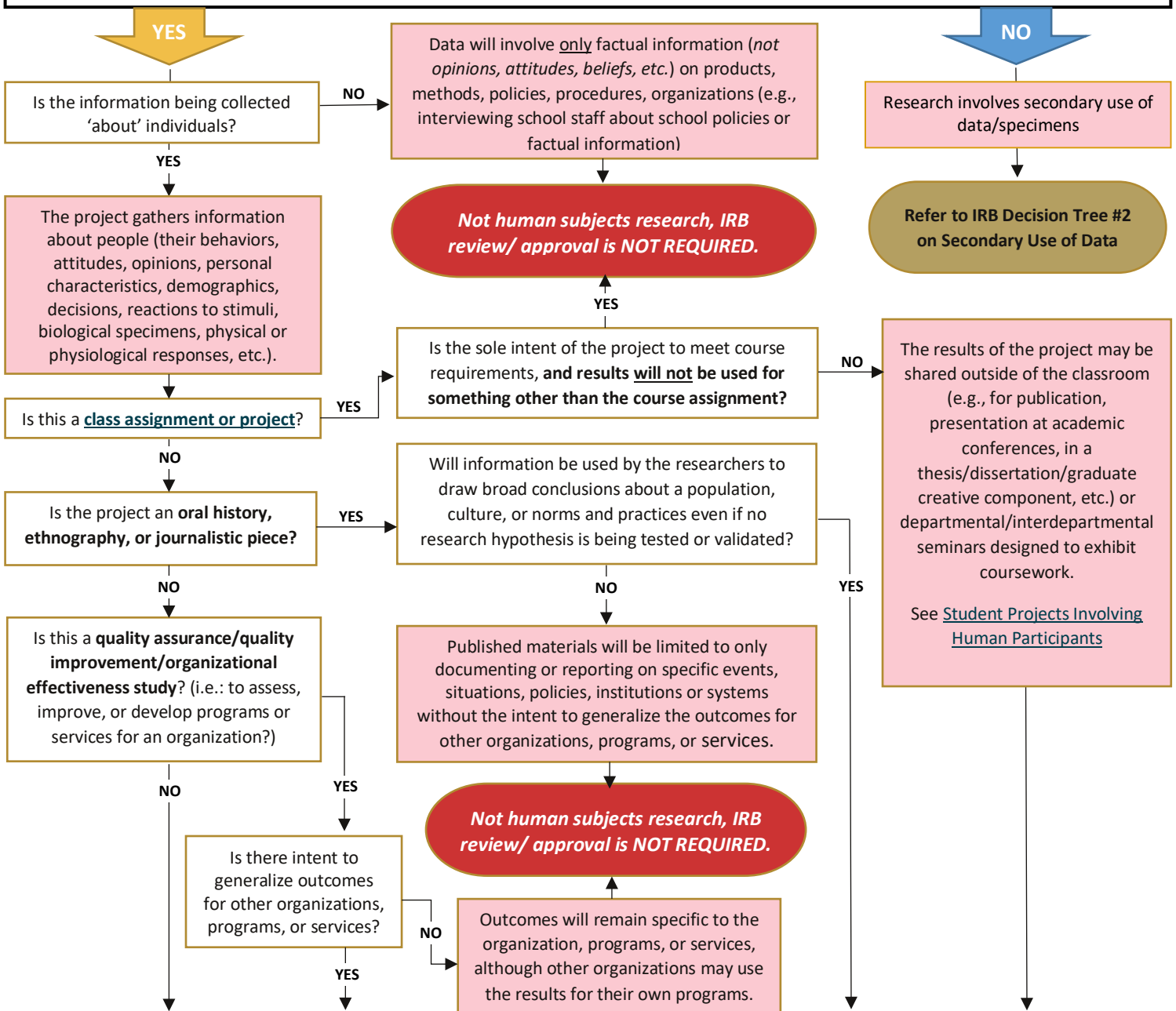


## Decision Tree #1

### Does Your Project Require IRB Approval?

**Will you, a member of your research team or a collaborator observe, interact with, or intervene with living individuals to gather information that will be used for research? Examples:**

- Surveys, questionnaires, focus groups, interviews
- Games, experiments, or tasks in physical or in electronic environments
- Physical or biomedical procedures – imaging, scanning, blood collections, anthropomorphic measurement procedures, exercise
- Diet or nutrition studies, taste tests
- Studies examining effectiveness of educational strategies, teaching methods, curricula
- Use of instruments, sensors, electronic devices, apps, software, or recording mechanisms (e.g., video, screen capture, key logging, etc.) to collect data or monitor or influence behavior
- Passive observation of private behavior (in physical or online environments, including social media)
- Studies examining individuals' responses to manipulation of their physical or online environment
- Any other activity that involves observation of, or interaction with, individuals to gather information for research (in physical or online environments, including social media)



**Project is research with human subjects, and IRB APPROVAL or DETERMINATION OF EXEMPTION IS REQUIRED before the study may begin. An IRB application may be completed in IRBManager. Questions? Contact IRB@iastate.edu.**